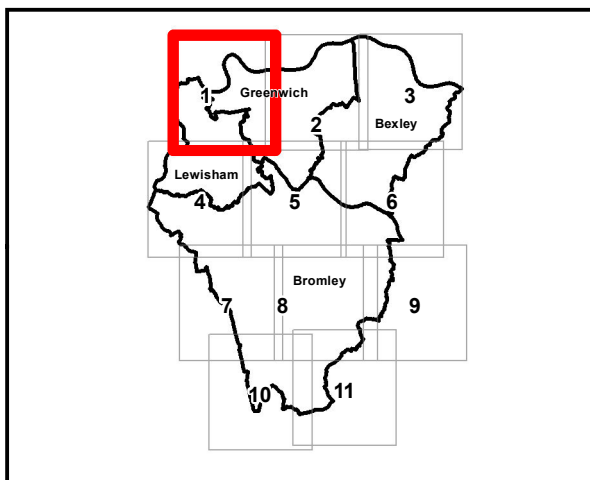


Key Plan



Aberdeen House
South Road
Haywards Heath
West Sussex
RH16 4NG
United Kingdom

www.jbaconsulting.com

for

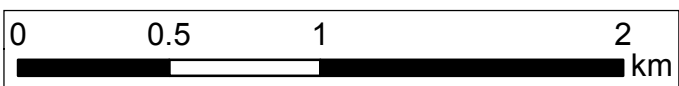
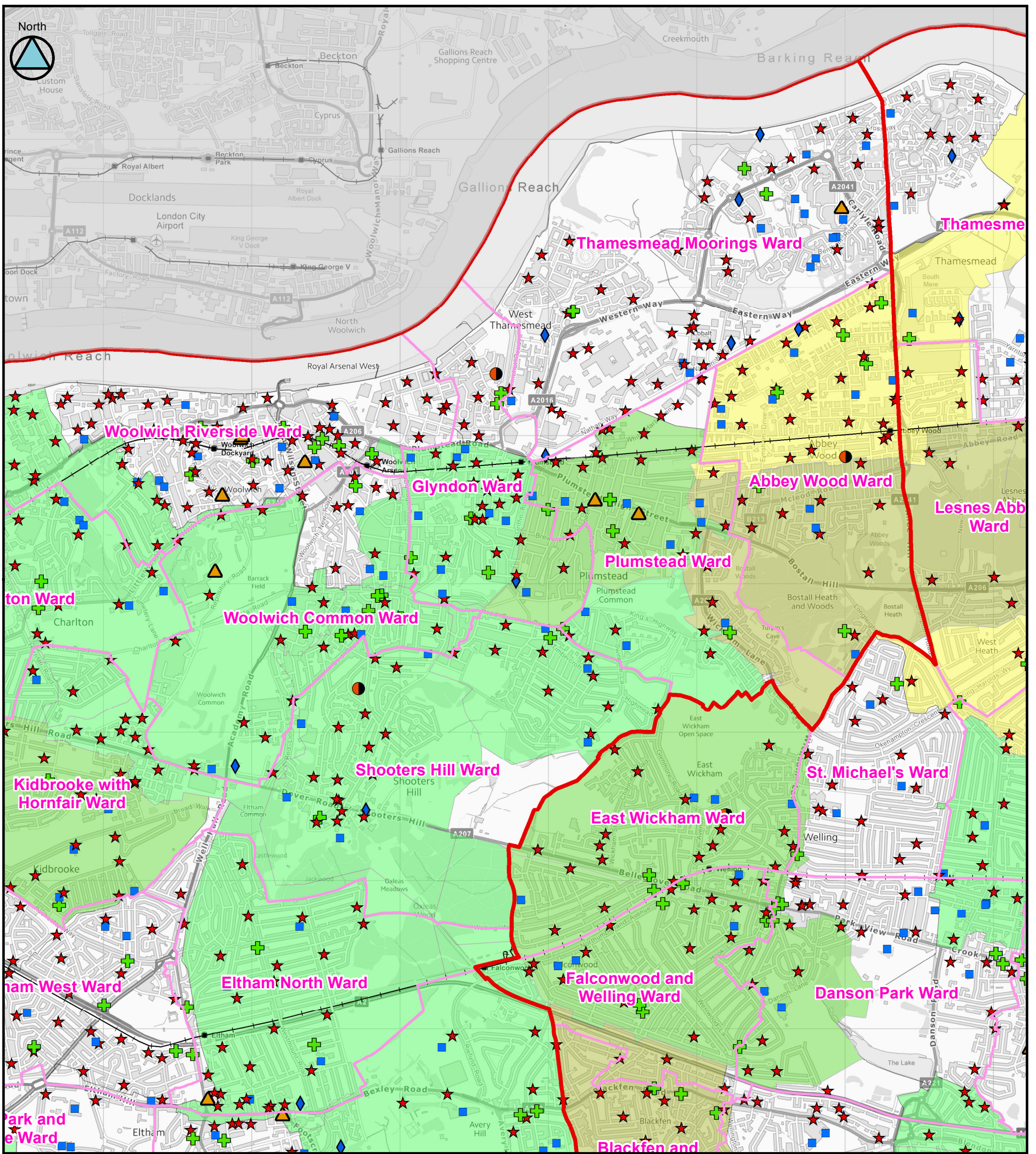
SOUTH-EAST LONDON LOCAL FLOOD RISK MANAGEMENT STRATEGY Sewer flooding

(Tile Number 1 of 11)

Contains Ordnance Survey data © Crown copyright and database right 2014.

This document is the property of Jeremy Benn Associates Ltd. It shall not be reproduced in whole or in part, nor disclosed to a third party, without the permission of Jeremy Benn Associates Ltd.

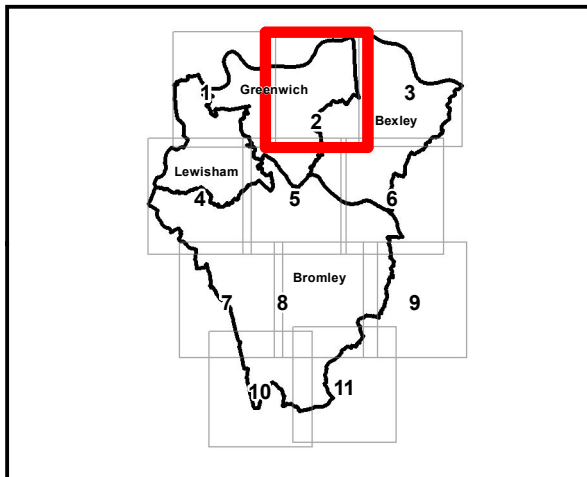
Original @ A3



Legend

Wards	Economic Activity
South-East London Boroughs	Railway Stations
National Receptors Database	Heritage Site
Education	Railway Track
Healthcare and Medical Services	Sewer Flood Records
Emergency Services	None
Nursing, Retirement and Rest Homes	1-5
Water Utilities	6-10
Electricity and Gas / Communications	11-20
	21-50
	51-100

Key Plan



Aberdeen House
South Road
Haywards Heath
West Sussex
RH16 4NG
United Kingdom

www.jbaconsulting.com

t +44 (0)1444 473 652
f +44 (0)8458 627 772
e info@jbaconsulting.com

for

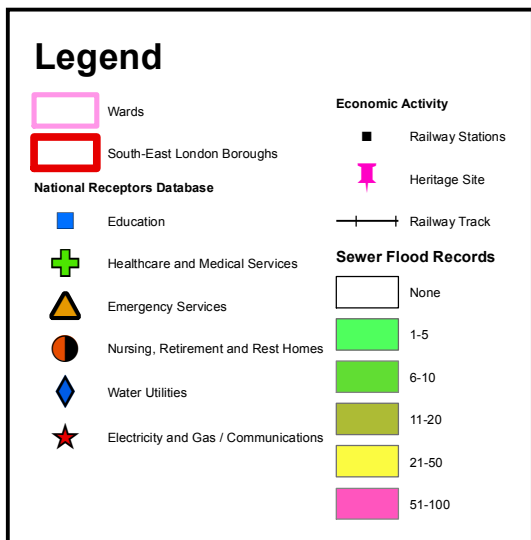
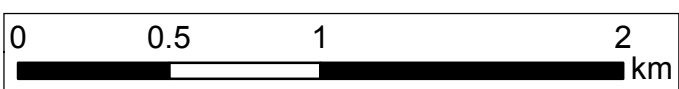
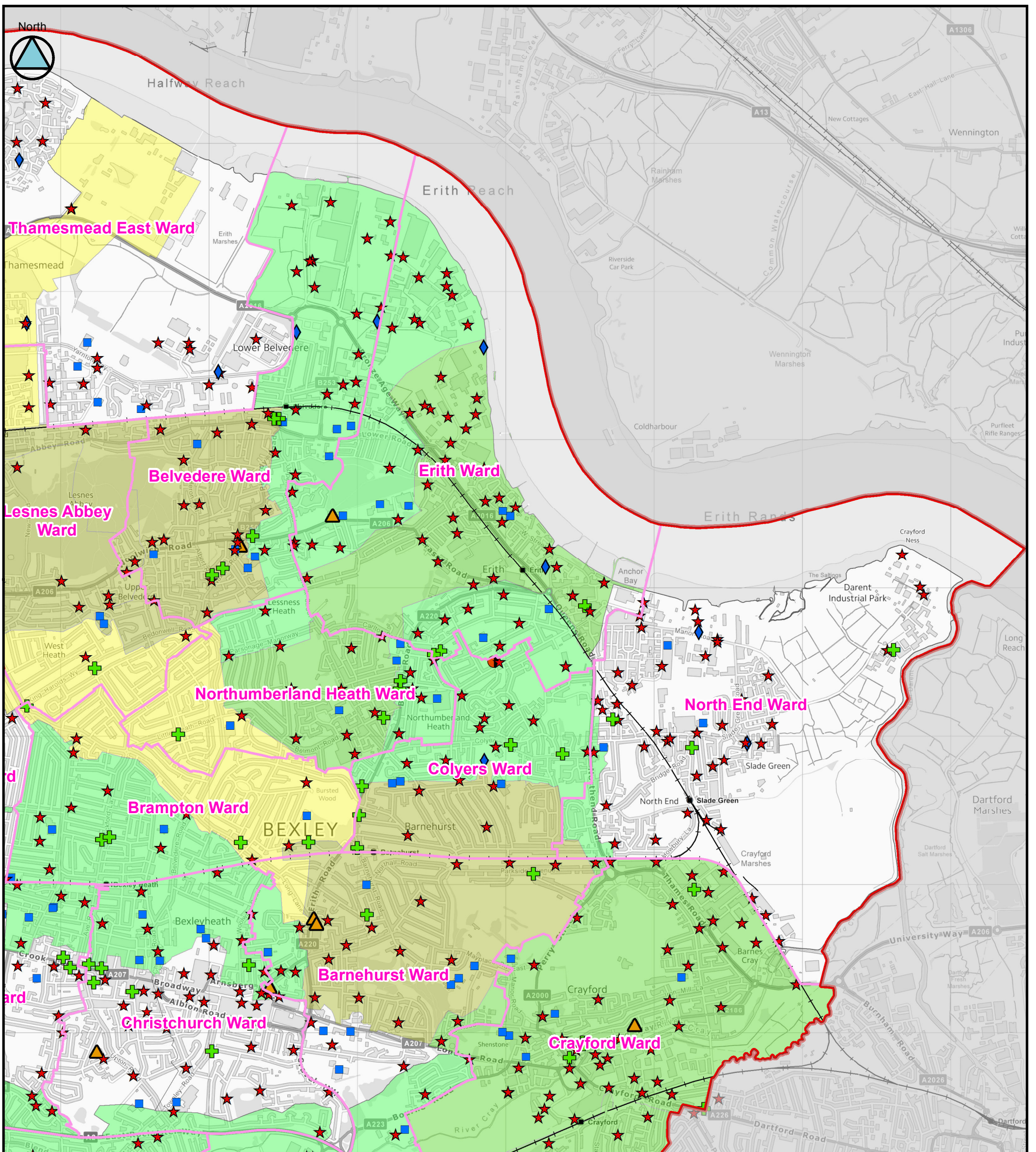
SOUTH-EAST LONDON LOCAL FLOOD RISK MANAGEMENT STRATEGY
Sewer flooding

(Tile Number 2 of 11)

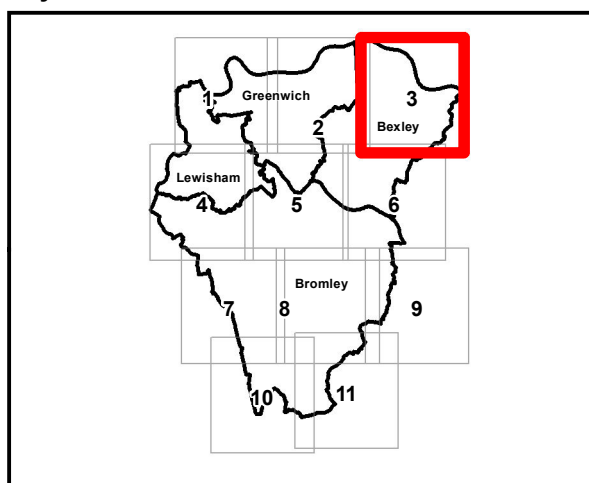
Contains Ordnance Survey data © Crown copyright and database right 2014.


This document is the property of Jeremy Benn Associates Ltd. It shall not be reproduced in whole or in part, nor disclosed to a third party, without the permission of Jeremy Benn Associates Ltd.

Original @ A3



Key Plan






Aberdeen House
South Road
Haywards Heath
West Sussex
RH16 4NG
United Kingdom

www.jbaconsulting.com

Offices at Coleshill, Doncaster, Edinburgh,
Haywards Heath, Limerick, Newcastle, Newport, Saltire, Skipton,
Tadcaster, Thirsk, Wallingford and Warrington



for

SOUTH-EAST LONDON LOCAL FLOOD RISK MANAGEMENT STRATEGY

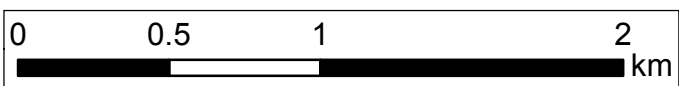
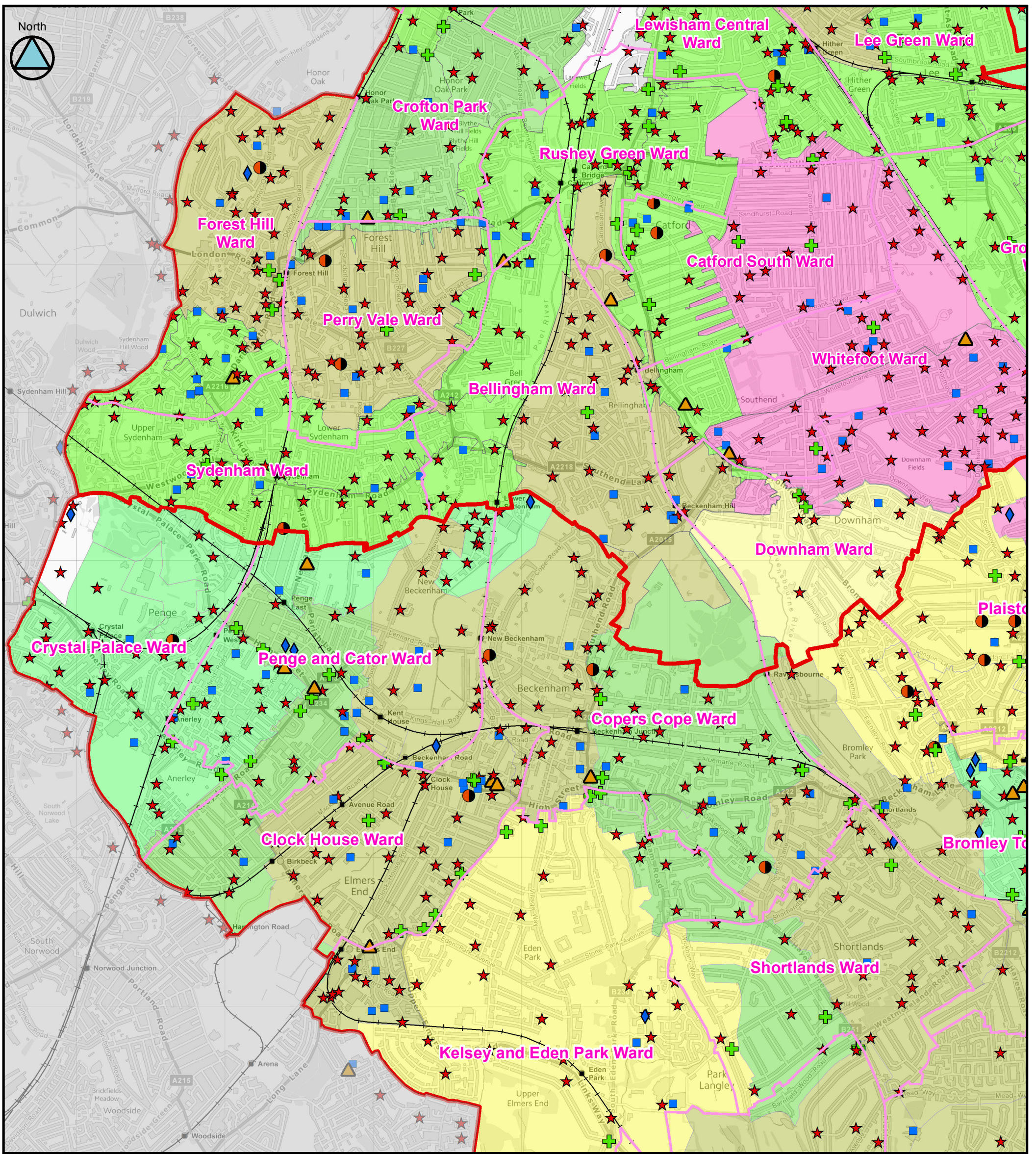
Sewer flooding

(Tile Number 3 of 11)

Contains Ordnance Survey data © Crown copyright and database right 2014.

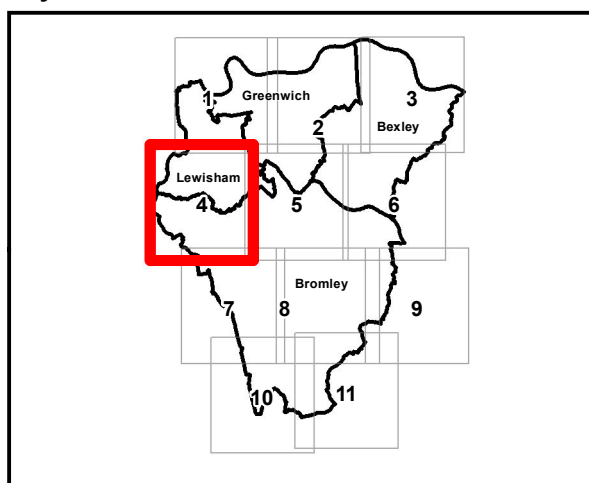
This document is the property of Jeremy Benn Associates Ltd. It shall not be reproduced in whole or in part, nor disclosed to a third party, without the permission of Jeremy Benn Associates Ltd.

Original @ A3



Legend	
	Wards
	South-East London Boroughs
National Receptors Database	
	Education
	Healthcare and Medical Services
	Emergency Services
	Nursing, Retirement and Rest Homes
	Water Utilities
	Electricity and Gas / Communications
Economic Activity	
	Railway Stations
	Heritage Site
	Railway Track
Sewer Flood Records	
	None
	1-5
	6-10
	11-20
	21-50
	51-100

Key Plan



Aberdeen House
South Road
Haywards Heath
West Sussex
RH16 4NG
United Kingdom

www.jbaconsulting.com

t +44 (0)1444 473 652
f +44 (0)8458 627 772
e info@jbaconsulting.com

for

SOUTH-EAST LONDON LOCAL FLOOD RISK MANAGEMENT STRATEGY

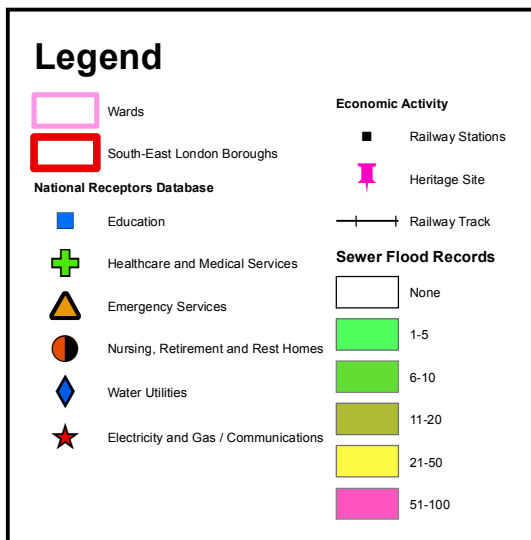
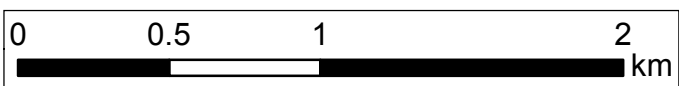
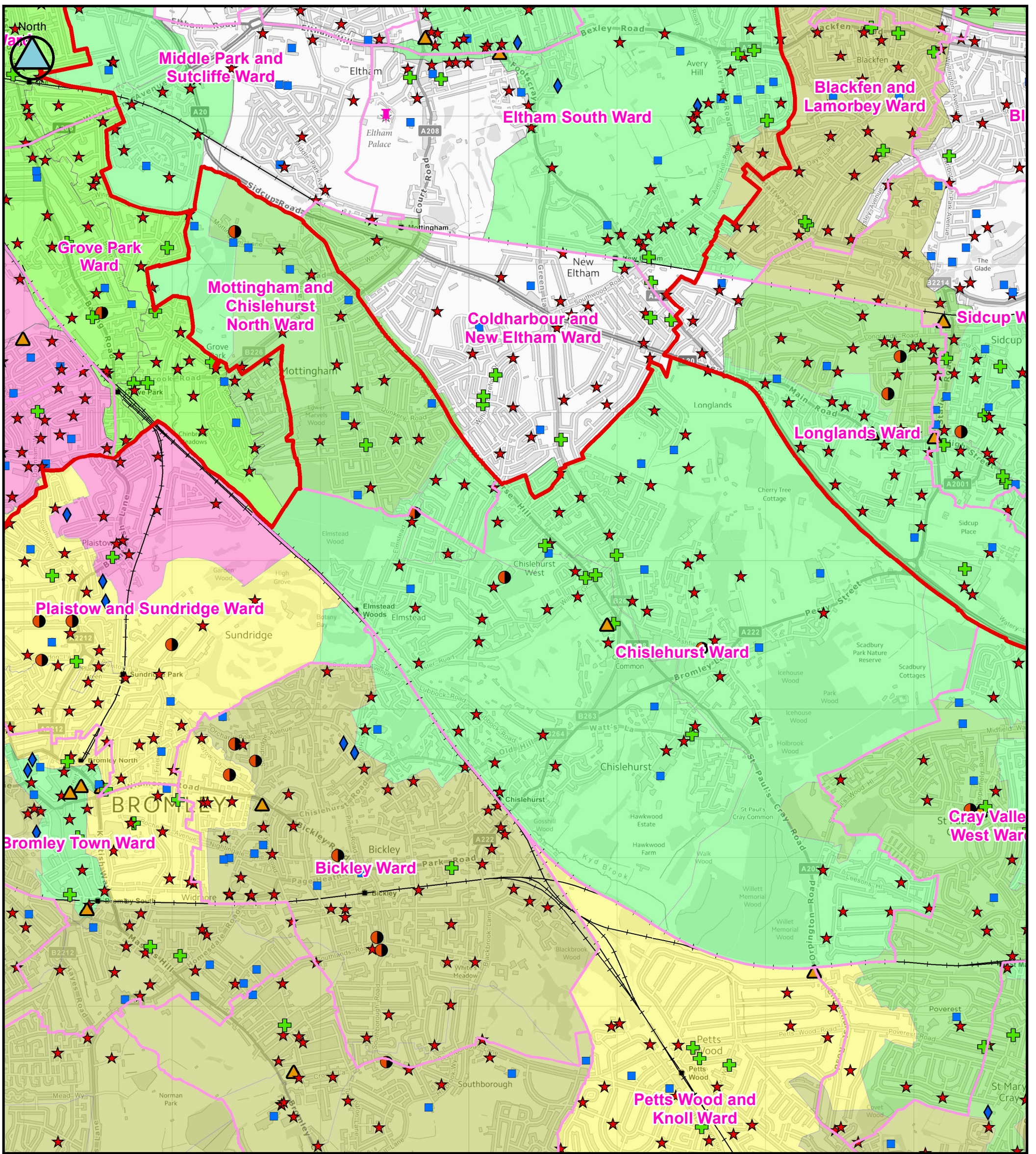
Sewer flooding

(Tile Number 4 of 11)

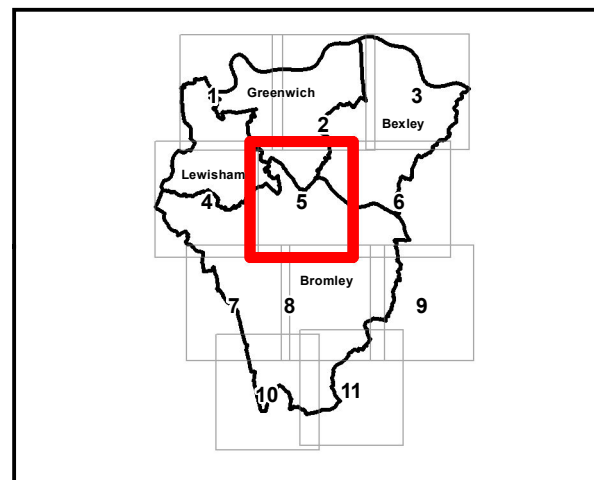
Contains Ordnance Survey data © Crown copyright and database right 2014.

This document is the property of Jeremy Benn Associates Ltd. It shall not be reproduced in whole or in part, nor disclosed to a third party, without the permission of Jeremy Benn Associates Ltd.

Original @ A3



Key Plan



JBA
consulting

Aberdeen House
 South Road
 Haywards Heath
 West Sussex
 RH16 4NG
 United Kingdom
www.jbaconsulting.com

Offices at Coleshill, Doncaster, Edinburgh,
 Haywards Heath, Limerick, Newcastle, Newport, Salfatre, Skipton,
 Tadcaster, Thirsk, Wallingford and Warrington

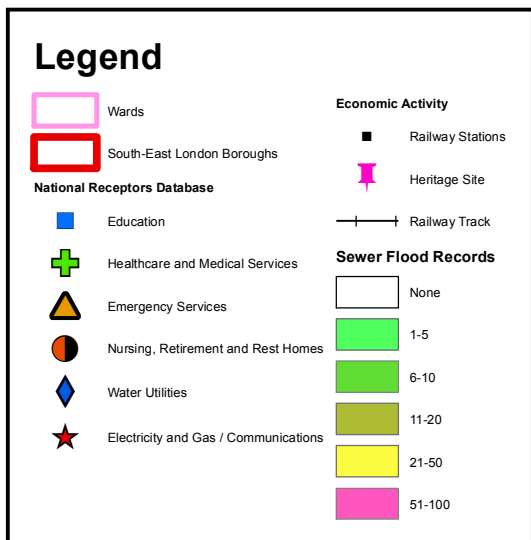
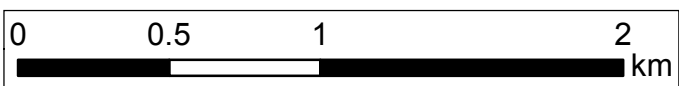
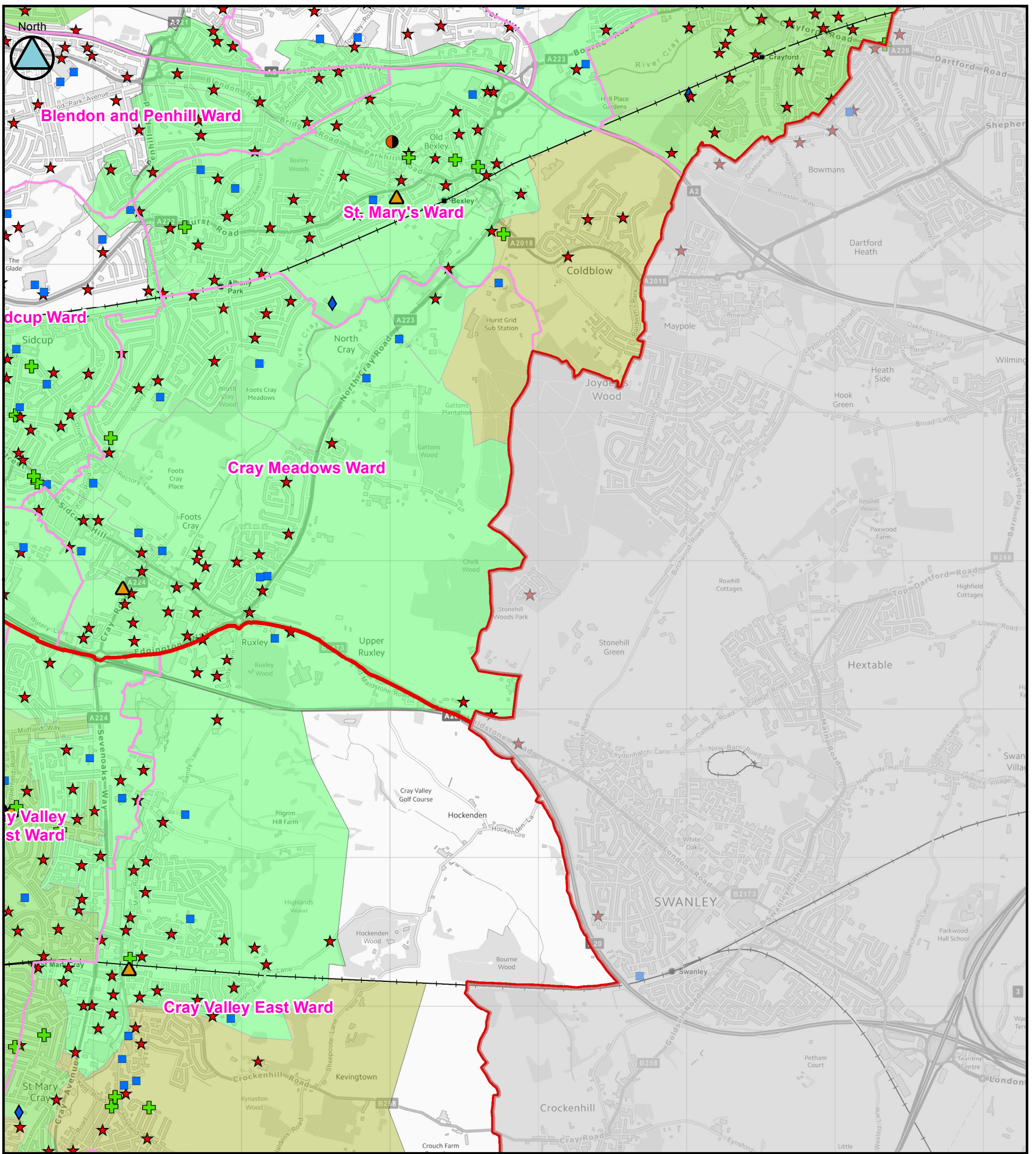
for

SOUTH-EAST LONDON LOCAL FLOOD
 RISK MANAGEMENT STRATEGY
 Sewer flooding

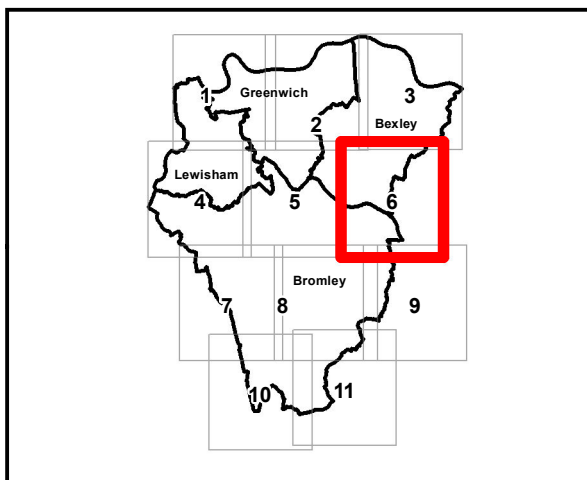
(Tile Number 5 of 11)

Contains Ordnance Survey data © Crown copyright and database right 2014.
 This document is the property of Jeremy Benn Associates Ltd. It shall not be reproduced in whole or in part, nor disclosed to a third party, without the permission of Jeremy Benn Associates Ltd.

Original @ A3



Key Plan



Aberdeen House
South Road
Haywards Heath
West Sussex
RH16 4NG
United Kingdom

www.jbaconsulting.com

t +44 (0)1444 473 652
f +44 (0)8458 627 772
e info@jbaconsulting.com

for

SOUTH-EAST LONDON LOCAL FLOOD RISK MANAGEMENT STRATEGY

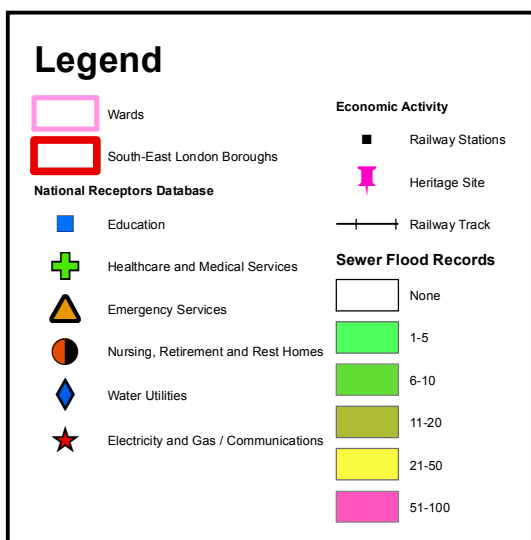
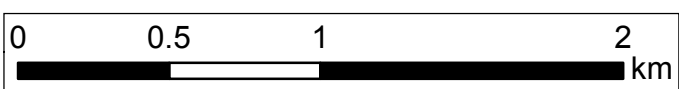
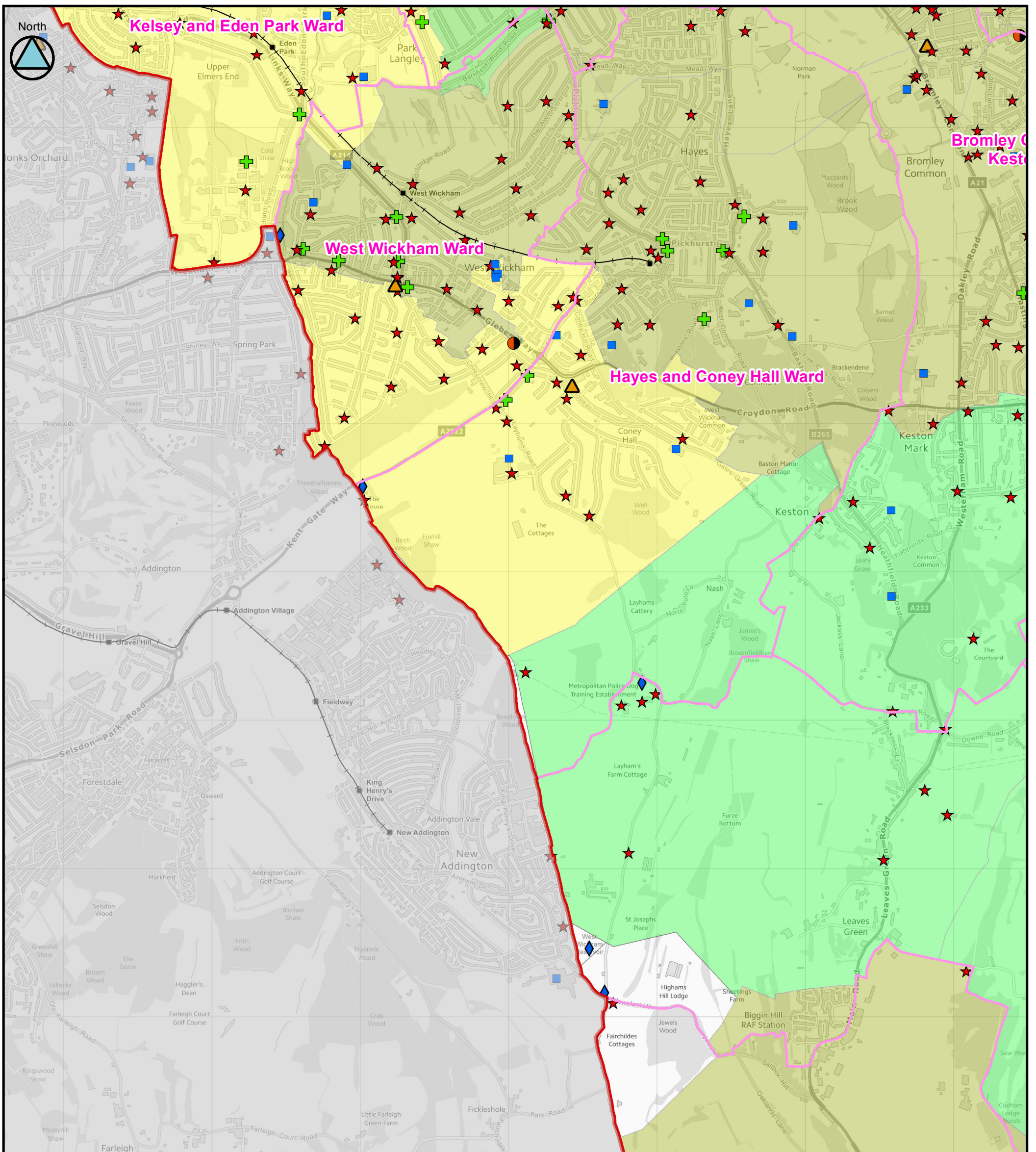
Sewer flooding

(Tile Number 6 of 11)

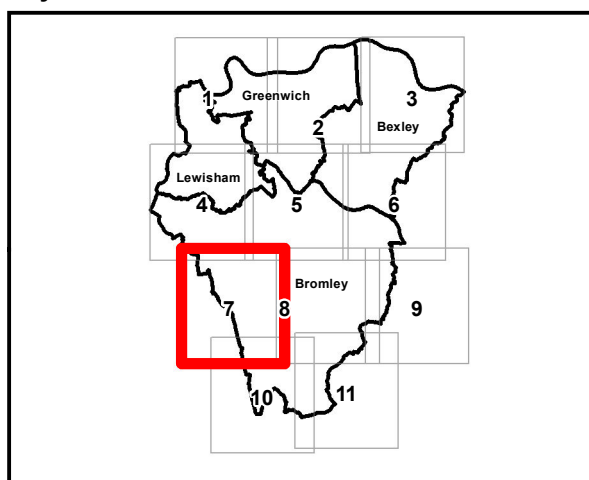
Contains Ordnance Survey data © Crown copyright and database right 2014.

This document is the property of Jeremy Benn Associates Ltd. It shall not be reproduced in whole or in part, nor disclosed to a third party, without the permission of Jeremy Benn Associates Ltd.

Original @ A3



Key Plan



Aberdeen House
South Road
Haywards Heath
West Sussex
RH16 4NG
United Kingdom

www.jbaconsulting.com

t +44 (0)1444 473 652
f +44 (0)8458 627 772
e info@jbaconsulting.com

for

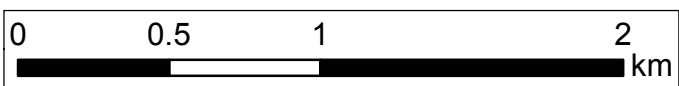
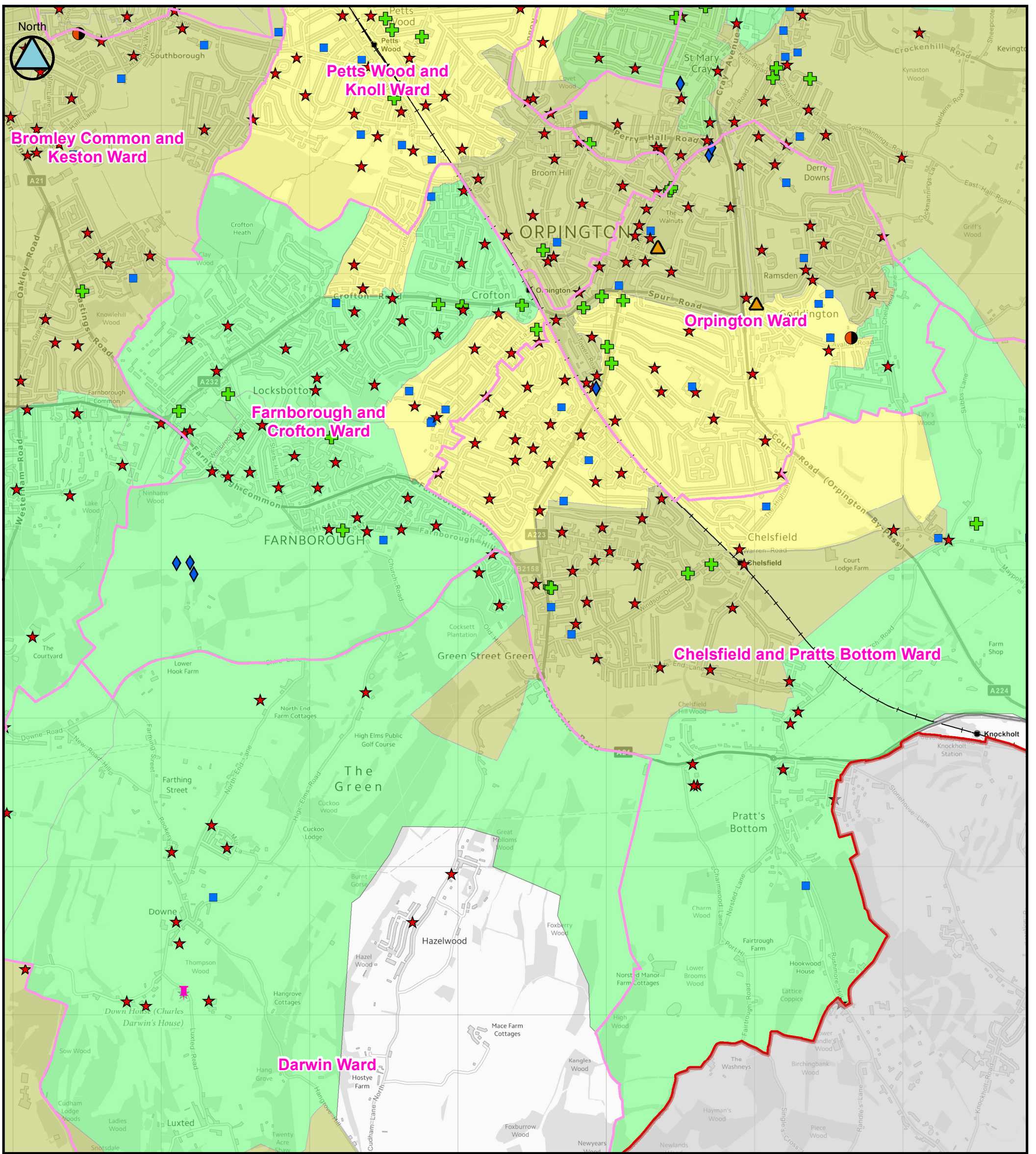
SOUTH-EAST LONDON LOCAL FLOOD RISK MANAGEMENT STRATEGY
Sewer flooding

(Tile Number 7 of 11)

Contains Ordnance Survey data © Crown copyright and database right 2014.

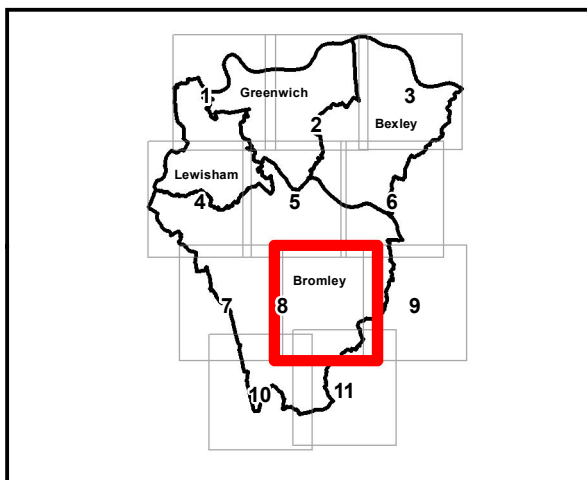
This document is the property of Jeremy Benn Associates Ltd. It shall not be reproduced in whole or in part, nor disclosed to a third party, without the permission of Jeremy Benn Associates Ltd.

Original @ A3



Legend	
	Wards
	South-East London Boroughs
National Receptors Database	
	Education
	Healthcare and Medical Services
	Emergency Services
	Nursing, Retirement and Rest Homes
	Water Utilities
	Electricity and Gas / Communications
Economic Activity	
	Railway Stations
	Heritage Site
	Railway Track
Sewer Flood Records	
	None
	1-5
	6-10
	11-20
	21-50
	51-100

Key Plan



JBA
consulting

Aberdeen House
South Road
Haywards Heath
West Sussex
RH16 4NG
United Kingdom

www.jbaconsulting.com

Offices at Coleshill, Doncaster, Edinburgh,
Haywards Heath, Limerick, Newcastle, Newport, Saltire, Skipton,
Tadcaster, Thirsk, Wallingford and Warrington

for

SOUTH-EAST LONDON LOCAL FLOOD RISK MANAGEMENT STRATEGY

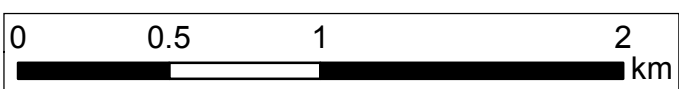
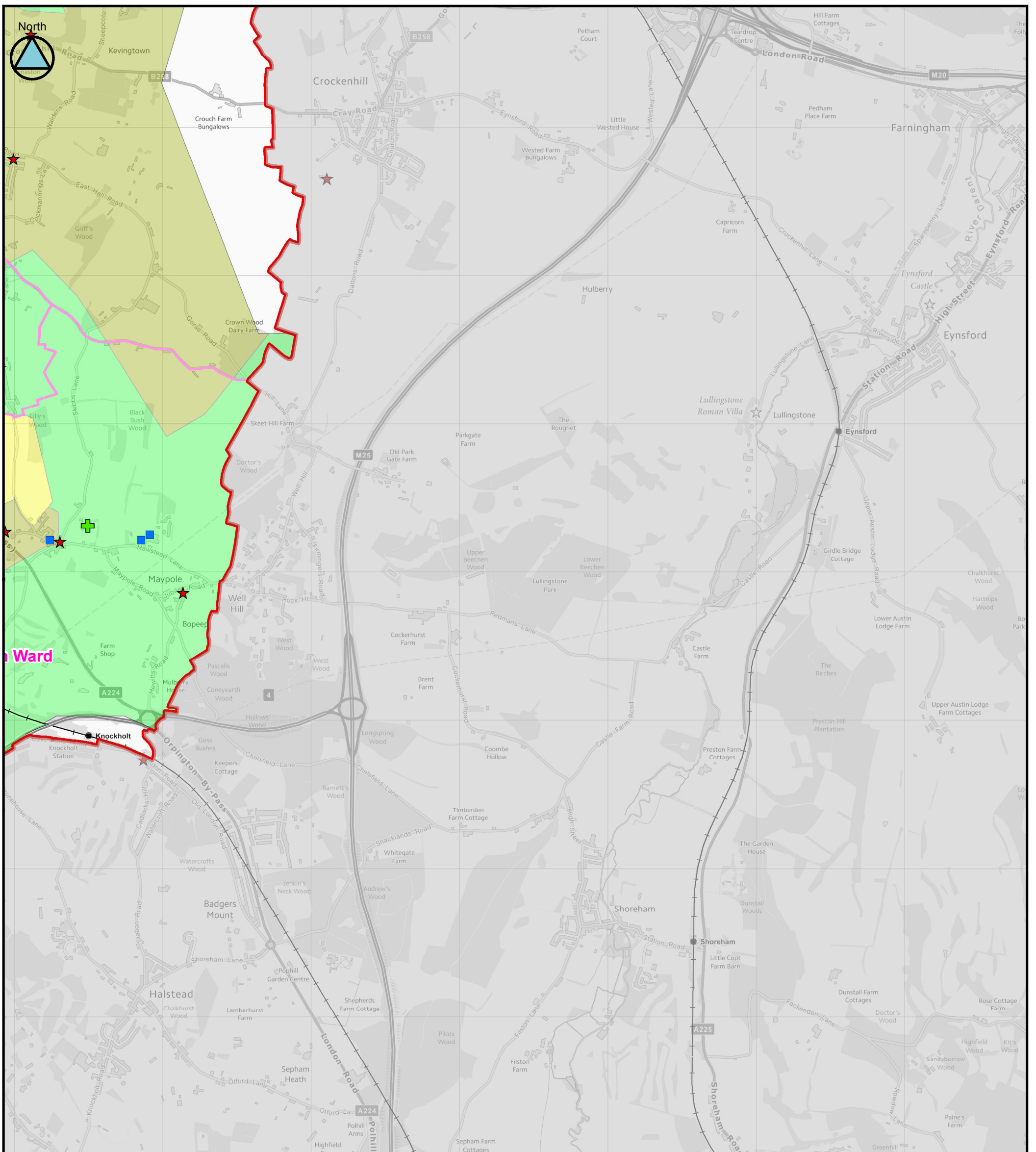
Sewer flooding

(Tile Number 8 of 11)

Contains Ordnance Survey data © Crown copyright and database right 2014.

This document is the property of Jeremy Benn Associates Ltd. It shall not be reproduced in whole or in part, nor disclosed to a third party, without the permission of Jeremy Benn Associates Ltd.

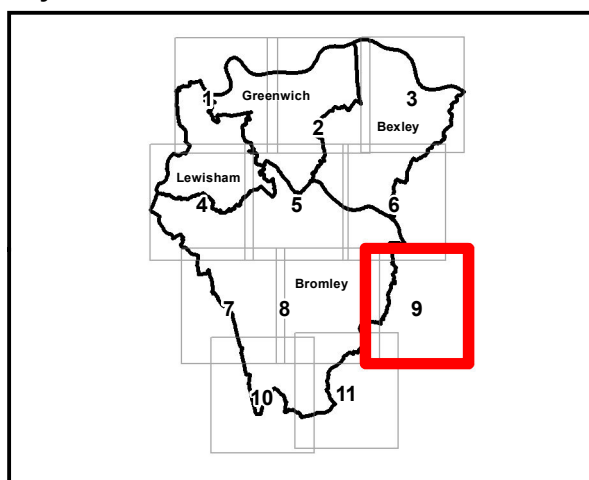
Original @ A3




Legend

Wards	Railway Stations
South-East London Boroughs	Heritage Site
National Receptors Database	
Education	Railway Track
Healthcare and Medical Services	Sewer Flood Records
Emergency Services	None
Nursing, Retirement and Rest Homes	1-5
Water Utilities	6-10
Electricity and Gas / Communications	11-20
	21-50
	51-100

Key Plan






Aberdeen House
South Road
Haywards Heath
West Sussex
RH16 4NG
United Kingdom

www.jbaconsulting.com

t +44 (0)1444 473 652
f +44 (0)8458 627 772
e info@jbaconsulting.com

Offices at Coleshill, Doncaster, Edinburgh,
Haywards Heath, Limerick, Newcastle, Newport, Saltire, Skipton,
Tadcaster, Thirsk, Wallingford and Warrington



for

SOUTH-EAST LONDON LOCAL FLOOD RISK MANAGEMENT STRATEGY

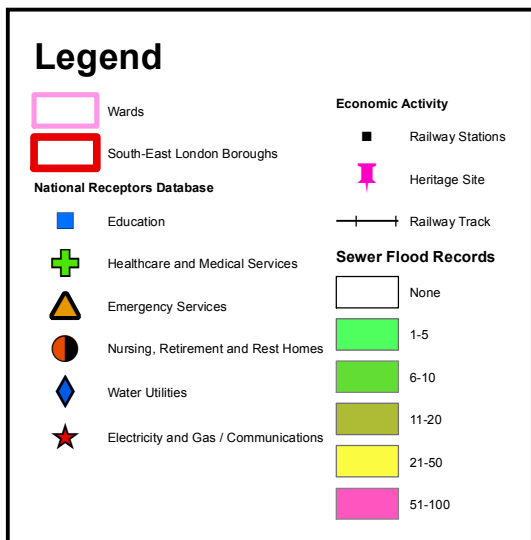
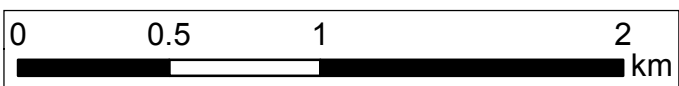
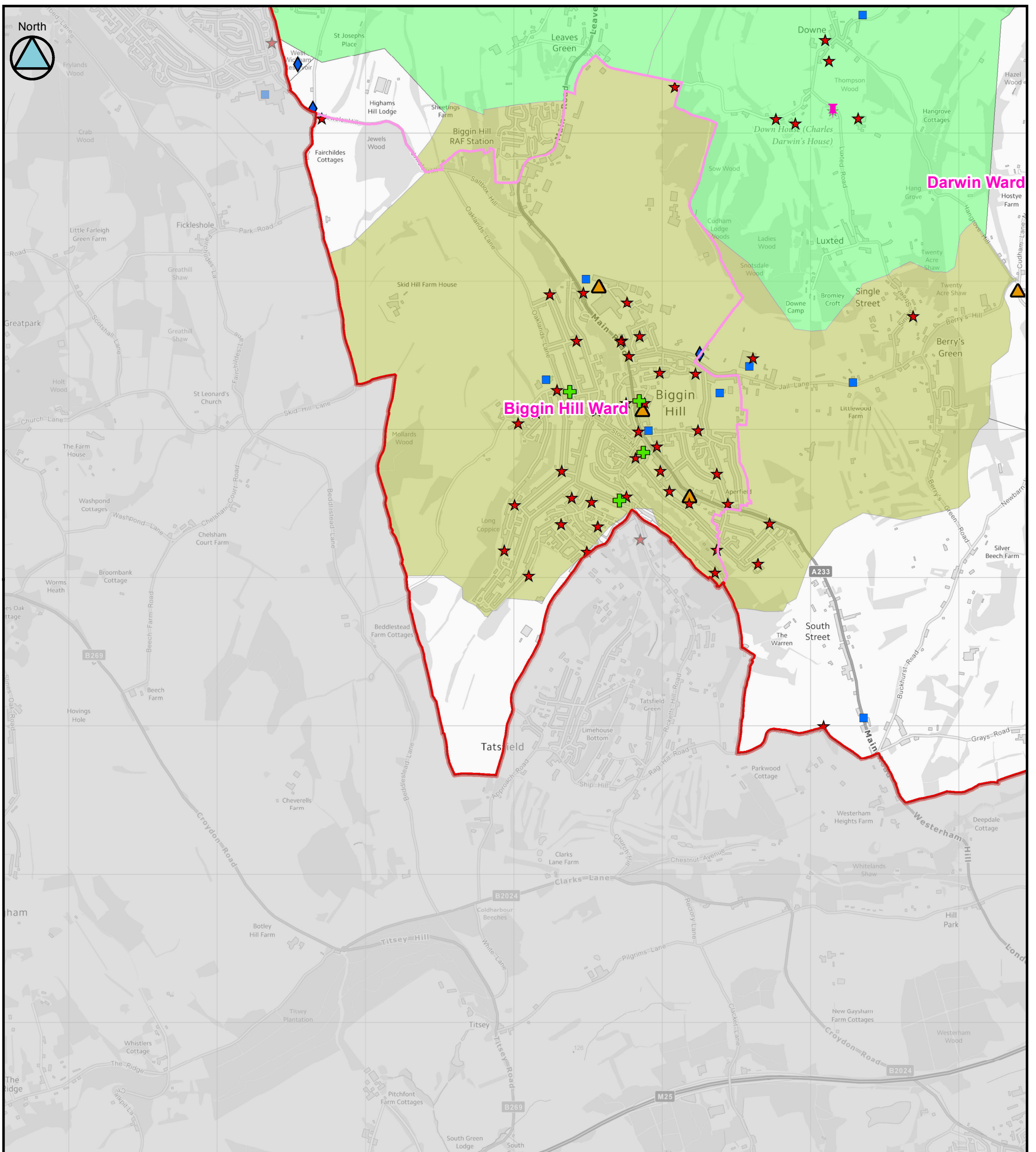
Sewer flooding

(Tile Number 9 of 11)

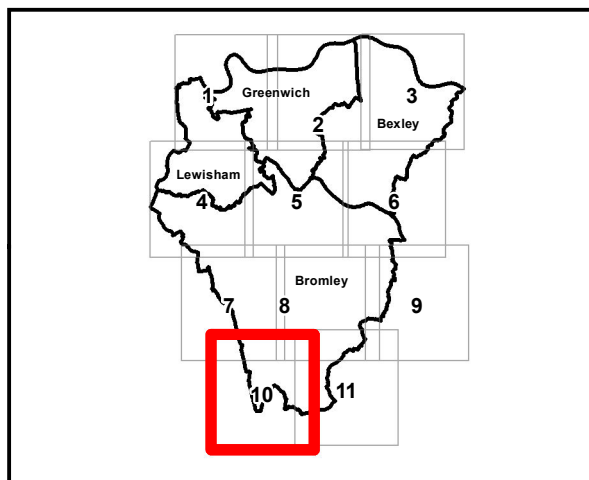
Contains Ordnance Survey data © Crown copyright and database right 2014.

This document is the property of Jeremy Benn Associates Ltd. It shall not be reproduced in whole or in part, nor disclosed to a third party, without the permission of Jeremy Benn Associates Ltd.

Original @ A3



Key Plan



JBA consulting

Aberdeen House
South Road
Haywards Heath
West Sussex
RH16 4NG
United Kingdom

www.jbaconsulting.com

t +44 (0)1444 473 652
f +44 (0)8458 627 772
e info@jbaconsulting.com

for

SOUTH-EAST LONDON LOCAL FLOOD RISK MANAGEMENT STRATEGY

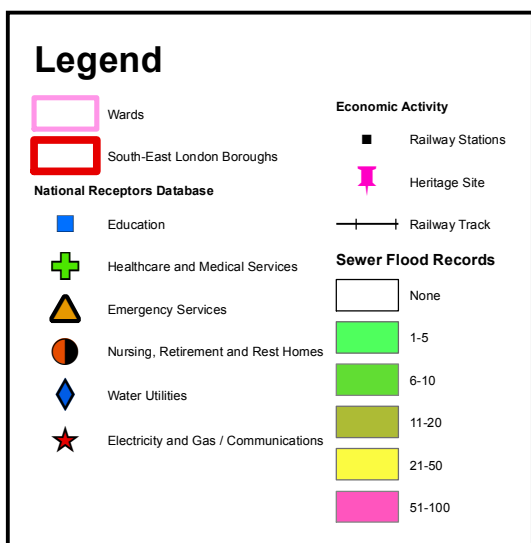
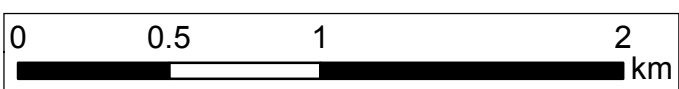
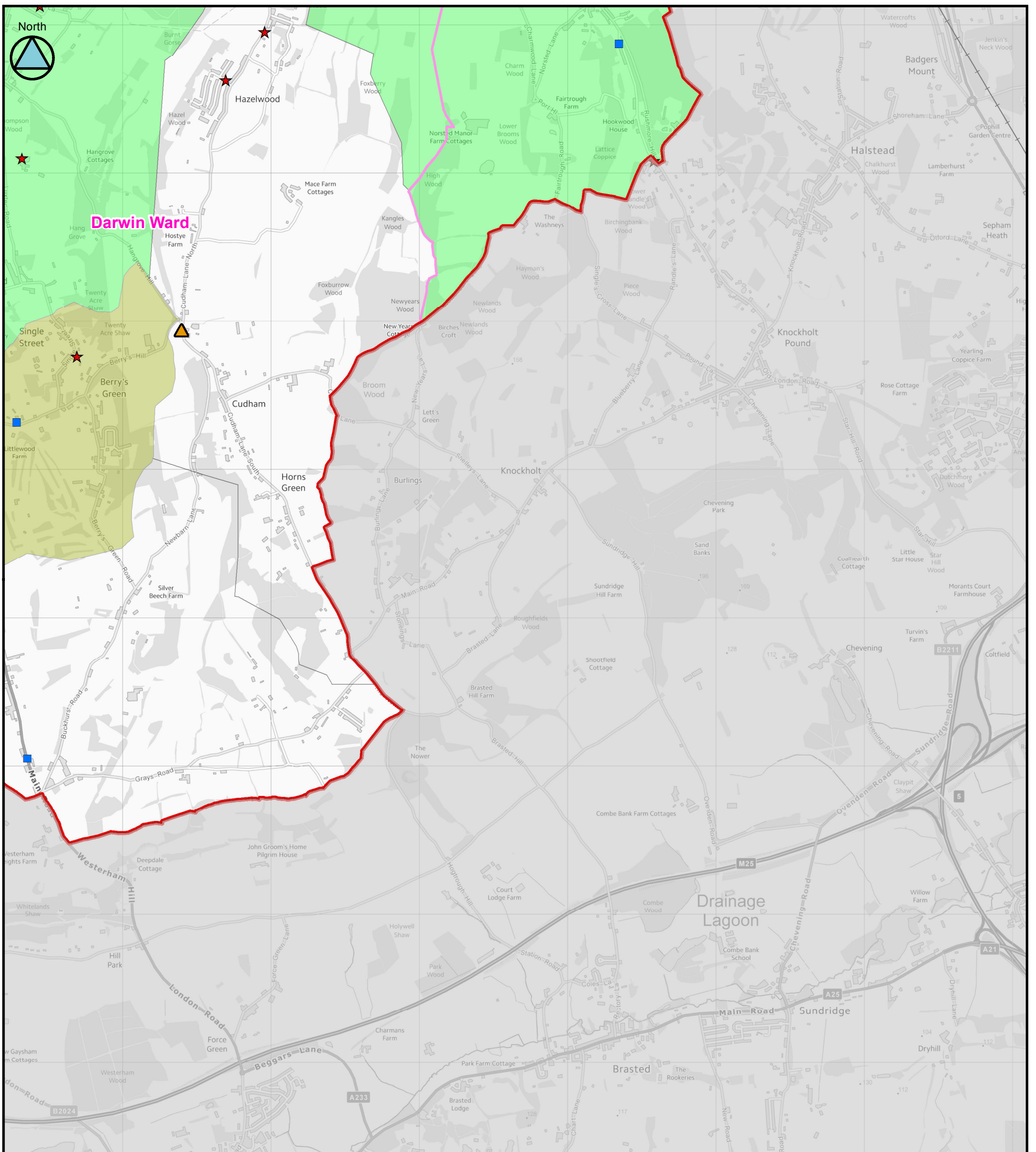
Sewer flooding

(Tile Number 10 of 11)

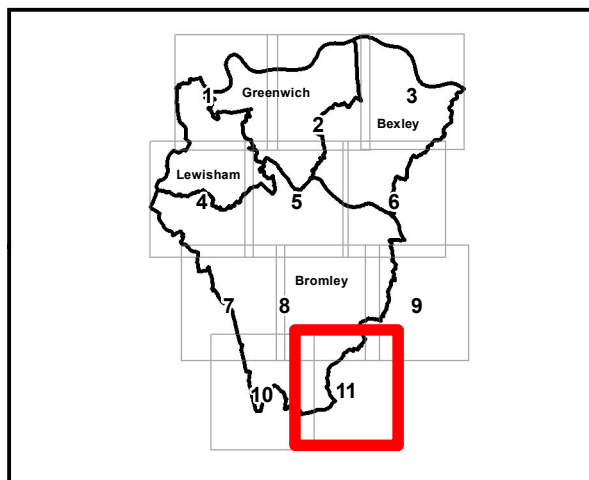
Contains Ordnance Survey data © Crown copyright and database right 2014.


This document is the property of Jeremy Benn Associates Ltd. It shall not be reproduced in whole or in part, nor disclosed to a third party, without the permission of Jeremy Benn Associates Ltd.

Original @ A3



Key Plan






Aberdeen House
South Road
Haywards Heath
West Sussex
RH16 4NG
United Kingdom

www.jbaconsulting.com

Offices at Coleshill, Doncaster, Edinburgh,
Haywards Heath, Limerick, Newcastle, Newport, Saltire, Skipton,
Tadcaster, Thirsk, Wallingford and Warrington



for

SOUTH-EAST LONDON LOCAL FLOOD RISK MANAGEMENT STRATEGY
Sewer flooding

(Tile Number 11 of 11)

Contains Ordnance Survey data © Crown copyright and database right 2014.

This document is the property of Jeremy Benn Associates Ltd. It shall not be reproduced in whole or in part, nor disclosed to a third party, without the permission of Jeremy Benn Associates Ltd.

Original @ A3